



**LÍDERES EN NUESTRO CAMPO**



**ENGUIX, S.L.**

**MANUFACTURING AND MARKETING OF AGRICULTURAL MACHINERY**

# PRESENTATION OF ENGUX, S.L.

COMPANY ESTABLISHED IN 1959

GREAT TEAM WITH EXPERIENCE AND QUALIFICATION

ADAPTATION OF PRODUCTS TO CUSTOMERS

BEST PERFORMANCE OF THE MACHINES TO DEVELOP OTHER WORK AT THE SAME TIME

MACHINE PREPARED FOR ANY TYPE OF FARMING, LAND MODEL OF TRACTOR  
...

RESISTANCE, QUALITY, PERFORMANCE, MINIMUM MAINTENANCE

CONSTANT COMMERCIAL AND TECHNICAL SUPPORT TO CUSTOMERS AND THE DEALER



## 3.300 m<sup>2</sup> SERVICE TO OUR CUSTOMERS



# OBJETIVES OF ENGUIX, S.L.

CONSTANT INNOVATION IN I+D+I MACHINERY FOR NEW MODELS

REDUCE THE COST OF AGRICULTURAL PRODUCTION, INCREASE YOUR PROFITABILITY

ENHANCE THE QUALITY AND CROP PRODUCTION (TN. MORE PER HECTARE)

MACHINES TO DEVELOP MULTIPLE FUNCTIONS AT THE SAME TIME (TIME SAVING)

TECHNICAL IMPROVEMENTS IN PROMOTING THE CROPS WITH THE PROPER MECHANICS

CONSTANT ADVISOR TO CUSTOMERS AND DEALERS

CERTIFICATION ISO 9000, ISO 14000 (END OF THE IMPLEMENTATION)

SEARCH THE PROTECTION OF THE ENVIRONMENT

OFFER THE BEST PRICE-QUALITY RELATIONSHIP

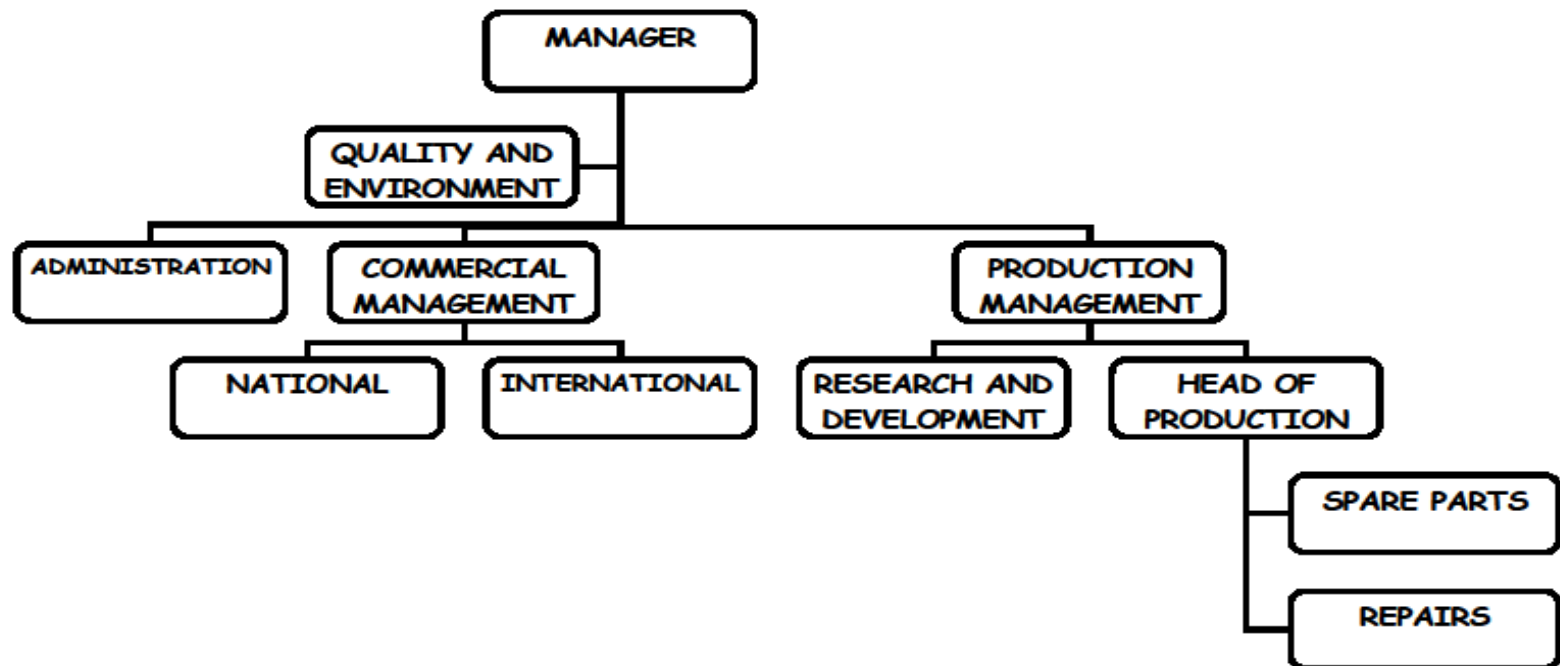
ADAPTED TO THE CLIENT AND OR DISTRIBUTOR

BE A LANDMARK INTERNATIONAL AGRICULTURAL MACHINERY MANUFACTURING QUALITY

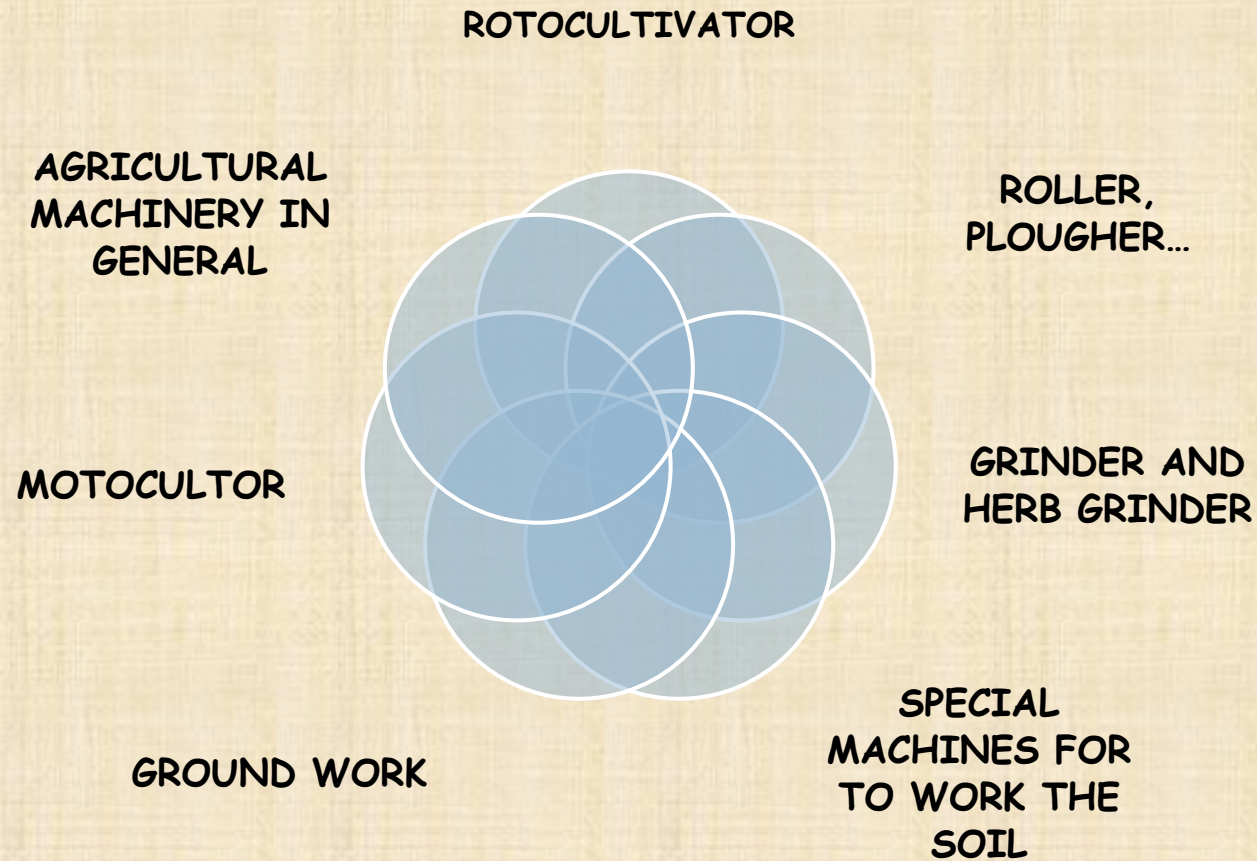
MORE PRODUCTION FOR OTHER MANUFACTURERS

ASSEMBLY MACHINES MAKING IN OLDER PARTS OF OUR PRODUCTS SALES

# ORGANIZATION OF ENGUIX, S.L.



# PRODUCT LINES





# PRODUCT LINES

## ROTOCULTIVATOR

- FROM 20 H.P. UP TO 500 H.P. POWER
- METRO FROM 1 TO 5 FEET OF WORK
- UP TO 40 cm. DEPTH
- UP TO 10 km / h IN WORKING SPEED
- NODULAR CAST IRON SIDE CARTER AND DOUBLE ROW BEARINGS  
KITE ALL MODELS
- REINFORCED HIGH PERFORMANCE MODELS
- ADAPTED FOR ALL TYPES OF LAND, CROPS, TRACTORS ...
- 68 DIFFERENT MODELS TO 12 POSSIBLE OPTIONS EACH OF THEM  
AND 6 DIFFERENT TYPES OF BLADES
- QUALITY ASSURANCE ENGUIX

# LÍNEAS DE PRODUCTOS





# PRODUCT LINES

## ROLLER, PLOUGHER...

- COUPLED MODEL FOR ANY ROTOCULTIVADOR
- MECHANICAL OR HYDRAULIC SYSTEMS FOR USE
- REDUCED THE TIME PASSES AND SITE PREPARATION



# PRODUCT LINES

## GRINDER AND HERB GRINDER

- METRES FROM 0.80 TO 2.99 METERS OF WORK
- UP TO 16 cm. DIAMETER OF PRUNING
- UP TO 6-8 km/h WORK IN RATE
- PREPARED FOR BLADE / HAMMERS
- ELECTRONIC BALANCE, REINFORCED BEARING, HASH SAWS, ROLL STABILIZERS ON ALL MODELS ...
- REINFORCED HIGH PERFORMANCE MODELS
- ADAPTED FOR ALL TYPES OF PRUNING, HERB, LAND, TRACTORS ... WITH MODELS AS SPECIAL TYPE SHREDDING
- 65 DIFFERENT MODELS TO 10 POSSIBLE OPTIONS EACH OF THEM







# PRODUCT LINES

## SPECIAL MACHINES FOR TO WORK THE SOIL

- MULTIFUNCTIONAL EQUIPMENT FOR THE PREPARATION OF LAND FOR RICE PLANTING, WHICH CAN WORK IN DRY OR CLAY, INCORPORATING THE REMAINS OF THE CROP
- ROTOCULTIVADOR STONES FOR BURY
- ROTOCULTIVADOR DOUBLE SENSE OF MOVEMENT TO BURY STONE WORK OR AS A NORMAL ROTOCULTIVADOR
- MULTIFUNCTIONAL EQUIPMENT TO PREPARE THE GROUND, DO 2 TABLES, AND MAKES THE PLASTIC PIPE DRIP, ALL-IN-1 SINGLE PASS.
- REFINING EQUIPMENT SALT

# PRODUCT LINES



# PRODUCT LINES

## GROUND WORK

- CHISSEL
- CULTIVATORS
- DISKING
- VERNET
- SUBSOILER
- DISK HARROW

CULTIVATORS, GASOLINE OR DIESEL, FROM 6 TO 12 HP CARTER WITH CAST IRON AND REINFORCED GEARS

COLLECTING ECO DRIP PLASTIC AND RUBBER FOR VEGETABLE CROPS

## AGRICULTURAL MACHINERY IN GENERAL

- TRAILERS, TANDEM, PLATFORMS, TANK
- HYDRAULIC ELEVATORS
- SPRAY EQUIPMENT



# PROJECTS AND DEVELOPED STUDIES

- STUDY OF THE REDUCTION OF THE REPRODUCTION OF THE FLY THE MEDITERRANEAN
- ECOLOGICAL STUDY OF THE ELIMINATION OF THE REMAINS OF RICE
- EFFECTIVENESS IN BETWEEN GRINDING BLADE AND HAMMER
- MACHINERY FOR THE PREPARATION OF FIELD CROPS FOR BIO-ENERGY
- EQUIPMENT FOR PREPARING LAND FOR HORTICULTURE WITH STONES

## CLOSE RELATIONSHIP WITH OFFICIAL INSTITUTIONS:

- Politecnico University of Valencia (UPV)
- Research and Development Institute (IVIA)
- Centre for Development and Industrial Technology (CDTI)
- Ministry of Agriculture of the Valencian Community (IMPIVA)
- Metalworking Institute of Technology (AIMME)
- Valencian Institute of Export (IVIA)
- Generalitat Valenciana, Department of Agricultural Research in citrus and rice
- Agricultural Research Service C.M.A. "The Chaparrillo"
- Ministry of Economy and Technological Innovation of Madrid
- Transformer Exporters Association (ARVET)
- Manufacturers Association of the Valencian Community (ASMAVA)

# NEW PROJECTS I+D+i

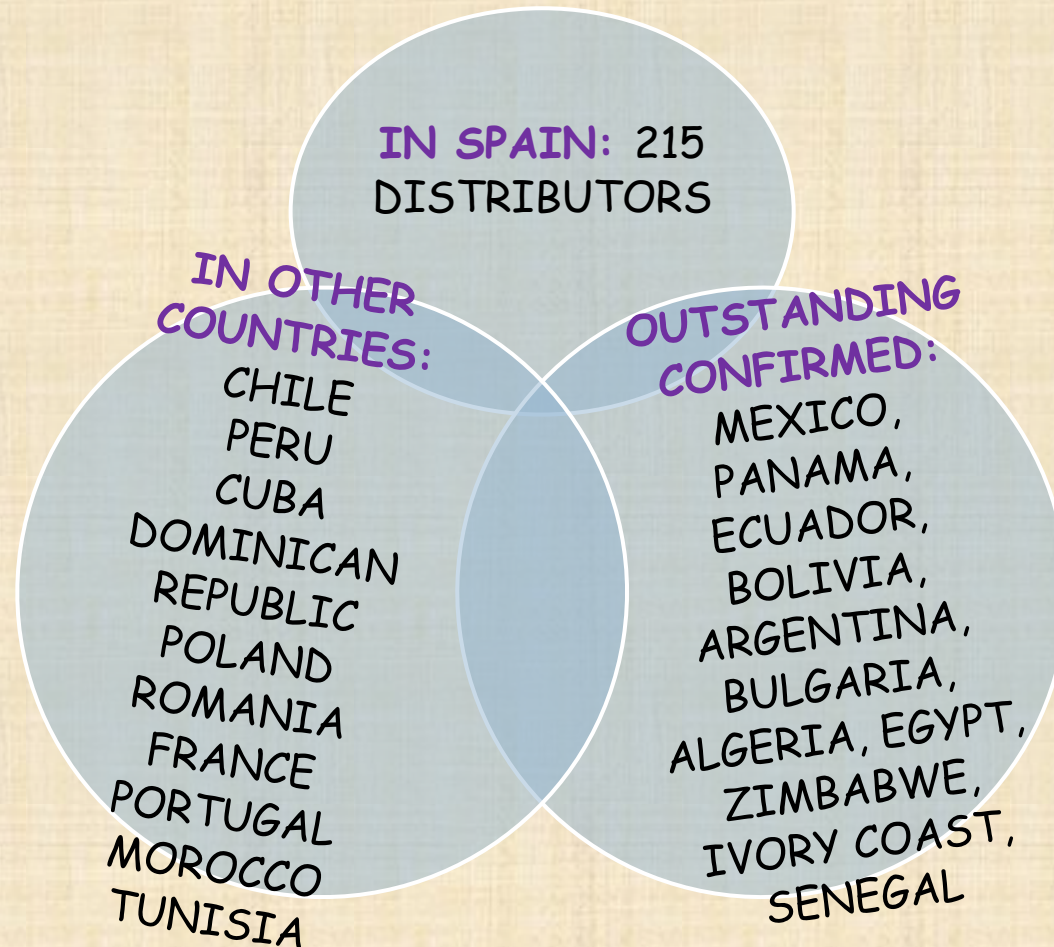
GRINDER AND TAKING IN DEPOSIT OF THE VINE SHOOT FOR USE OF BIOMASS AS (International Project Iberoeka)

GRINDER AND LIGNEOUS FOR TAKING IN TRAILER FOR USE AS A BIOMASS (International Project Iberoeka)

EQUIPMENT FOR THE PREPARATION OF LAND WITH REDUCTION OF DRYLAND 20% IN COSTS AND AN INCREASE OF 15% IN PRODUCTIVITY (International Project Eureka)

SHORT-HERB BAR HYDRAULIC LINES BETWEEN TREES

# ENGUIX, S.L. DISTRIBUTION NETWORK





# WORKING MACHINERY





# WORKING MACHINERY





# WORKING MACHINERY





# WORKING MACHINERY





# WORKING MACHINERY



# CONTACT

## FACTORY



AVDA. ESPIOCA, 122  
46460 SILLA (VALENCIA) ESPAÑA  
TF. +34.961.219.230  
FAX +34.961.219.233  
E-mail: [info@enguix.com](mailto:info@enguix.com)  
Web: [www.enguix.com](http://www.enguix.com)  
[www.maquinariaagricolaenguix.com](http://www.maquinariaagricolaenguix.com)

## DEPARTMENTS

- **COMMERCIAL:**  
[ventas@enguix.com](mailto:ventas@enguix.com)
- **SPARE:**  
[repuesto@enguix.com](mailto:repuesto@enguix.com)
- **TECHNICAL OFFICE:**  
[oficinatecnica@enguix.com](mailto:oficinatecnica@enguix.com)
- **ADMINISTRATION:**  
[contabilidad@enguix.com](mailto:contabilidad@enguix.com)
- **MANAGEMENT:**  
[vazquez@enguix.com](mailto:vazquez@enguix.com)
- **I+D+i:**  
[lara@enguix.com](mailto:lara@enguix.com)